

Brushless Solar Direct Lake Aerators

Built upon the solid foundation of our SD Series aerators, the **Professional-Grade BLDC** family of Solar Lake Aerators brings aeration to a new level of quality. Even during cloudy conditions, they provide **low-maintenance, high-volume Solar Aeration** on any site. ROI is maximized by eliminating batteries, AC wiring, and the ongoing expense of grid power.

Each unit is ruggedly constructed using high-quality, **American-Made** components with a proven history of durability. Brushless Compressors offer unmatched reliability, providing years of **trouble-free** operation. Thoughtful system design allows quick and easy installation by anyone, using just a few basic hand tools.

To back it all up, every BLDC system comes with an **Industry-Exclusive 5-Year Warranty**.

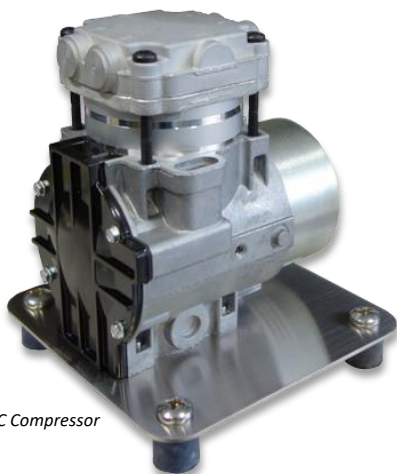
Innovative Design, Inside & Out

SD-BLDC Features:

- **Integrated Low-Frequency Sound Reduction System**
- External Air Connection Ports for ease of installation
- **Washable and Re-Usable** Primary Air Intake Filter
- Dramatically increased daily run hours
- **All-Welded Steel Base** with Powder Coat Finish
- **Rubber Isolation Compressor Mounts**
- Liquid-Filled, **Low-Temperature** Pressure Gauges
- Pressure loss is minimized, **increasing air output**
- Compact Size
- Works with any brand of diffuser
- **100% Factory Testing** ensures high quality
- Stainless Steel Locking Hasps & Hardware **will not rust**
- Over-Temperature Protection
- Electronic **Over-Current Protection**
- High-Flow ball bearing cooling fan
- **Standard 5-year Warranty** on all non-wearable parts



SLA-SD2-BLDC Shown



BLDC Compressor

Digital Motor Controller

3X the system life

100% American-Made

Feature	SLA-SD2-BLDC Specifications	SLA-SD4-BLDC Specifications
Power & Electrical		
Solar Module(s)	2x 100-Watt Modules	2x 60 Cell Modules
Racking	Fully Adjustable Top-of-Pole, Various Options Available	
Circuit Protection	Individual Rocker-Style Circuit Breakers	
Compressor		
Compressor Type	High-Efficiency DC Diaphragm	Dual High-Efficiency DC Diaphragm
Max Flow/Depth	2.5 SCFM/ 20' / 25PSI	5 SCFM/ 20' / 25PSI
Over-Pressure	Brass Automatic Pressure Relief Valve	
Flow Balancing	2x Full-Flow Brass Ball Valves	4x Full-Flow Brass Ball Valves
Sound Level	<65db @ 6'	<55db @ 6'
Air Intake	Washable & Reusable slide-in Primary Filter	
Thermal Management		
Enclosure Cooling	78 CFM Automatic Active Ventilation	156 CFM Automatic Active Ventilation
High-Temp Limit	Yes - With Automatic Re-Start	
Compressor	Long-Life Compressor Cooling Fan	2x Long-Life Compressor Cooling Fans
Air Distribution		
Connections	2x External Connection Ports w/fittings	4x External Connection Ports w/fittings
Diffuser Types	Works with any style diffuser	
Materials & Finishes		
Enclosure	ULTRAGUARD™ Fiberglass Reinforced Polyester Compression Molded Non-Corrosive/Non-Conductive Continuous, Poured-in-Place Gasket 316 Stainless Steel Hardware	
Steel Components	Formed Carbon Steel Baked-On Polyester Powder Coat	
Aluminum Rails	6360 T6 Anodized, .2-.25mil Thickness	
Codes & Standards	Structural, ASTM A36, A53 Plating ASTM B633	
Enclosure Weight (including base)	50 lbs	66 lbs
Coverage	Base System up to 2 acres	Base System up to 5 acres, larger systems available
Applications:		
<ul style="list-style-type: none"> ● Ponds & Lakes ● Storm Water ● Golf Courses ● Frac Pit Normalizing 	<ul style="list-style-type: none"> ● Livestock Watering ● Cranberry Growers ● Parks ● Sewage Systems 	<ul style="list-style-type: none"> ● Fish Farms ● Aquatic Engineering ● Preppers ● Irrigation ● Weed & Algae Control ● Habitat Management ● Gate De-Icing ● Marinas

(608)272-3999 • 3498 Acorn Ave. Sparta, WI 54656 • info@ussolarmounts.us • www.ussolarmounts.us
 Specifications subject to change at any time without notice.