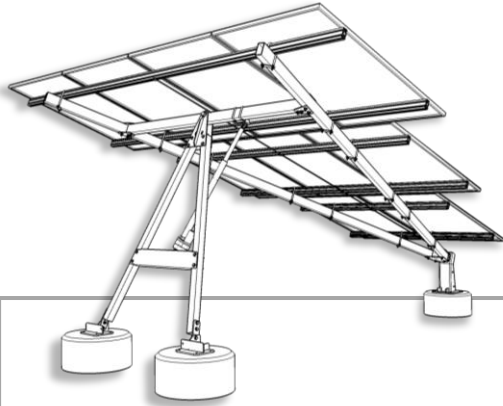


# Polaris Series

Polar Tracking Systems

# U.S. Solar Mounts



## Specifications

### Module Information

Number of Modules	9 Standard (60-Cell)
Modules Supported	Most Commercially Produced
Module Orientation	Portrait
Attachment Type	Stainless Steel Back Bolts or AL Top Clamps
Module Support	Extruded Structural Aluminum
Support Structure	Dual 2" x 4" Steel Beams

### Array Geometry

Array Height	Approx. 10' Flat Approx. 14' @ 45° Tilt
Array Width	Approx. 13' Flat
Tilt Angle Range	45°E - 45°W

### Drive & Controls

Drive Type	24- Volt Electric Actuator
Stow at Night	Yes
High Wind Auto Park	Yes, with Optional Anemometer
Control Method	Algorithm-Based Lauritzen Controller
Accuracy	+/- .5°
Backtracking	Yes
Communications	LAN / WiFi - Full Control via Web

### Materials Specifications

Extrusion Alloy	6360,T6	
Wind Load Rating	100 MPH @IBC	
Codes & Standards	Structural Steel	ASTM A36, A53
	Aluminum	T6 Hardness
	Anodizing	.2-.25 mil Thickness
	Galvanizing	ASTM A123M
	Plating	ASTM B633
Fasteners & Hardware	Galvanized	A325
	Stainless Steel	Type 316

### Optional Equipment

Wire Management System	Conduit Adapter Plates
WEEB Grounding Washers	Equipment Mounting Plate
WEEB Grounding Lugs	Rail Extrusion Caps

The U.S. Solar Mounts Polaris Series Tracking System is a robust, yet cost-effective, single-axis tracking system. Innovative features like factory assembled pivot components and built-in assembly guides make installation fast and simple.

The Polaris system allows for easy side-by-side installation of multiple trackers. This will accommodate all system sizes, from a single-array up to commercial-scale projects.

Foundations are small and simple, minimizing civil work and reducing pre-installation time & effort. Alternately, concrete slabs can be used.

The Polaris has been engineered to be geometrically balanced. This precision will provide years of reliable service by minimizing component wear and mechanical stresses. With very few moving parts, costs are much lower than dual-axis trackers and MTBF is greatly increased.

U.S. Solar Mounts builds the Polaris Series using powder coated steel components, anodized structural aluminum rails and stainless steel hardware.

In addition, every mounting system produced by U.S. Solar Mounts is 100% Made in America by Americans.

### Increased Energy Yield

The Polaris Series Tracking System produces up to **30% more power** annually compared to a fixed-tilt racking.